

HESTIA

LUXURY APARTMENTS

DIRECTORY

Contents

Building History

Practical Information

The Place Dimitressa 4

General Information

Airline Services

City Points of Interest

Useful Information

Nearest Hospitals

Embassies

Television

Electrical Appliances Instructions

Country Codes & Time Zones



WELCOME

Dear Guest,

The management and staff of Hestia Luxury Apartments Dimitressa 4 welcomes you to Athens.

During your stay please do not hesitate to contact our Guest Experience Team for any requirements you may have.

We wish you a comfortable and a pleasant stay.

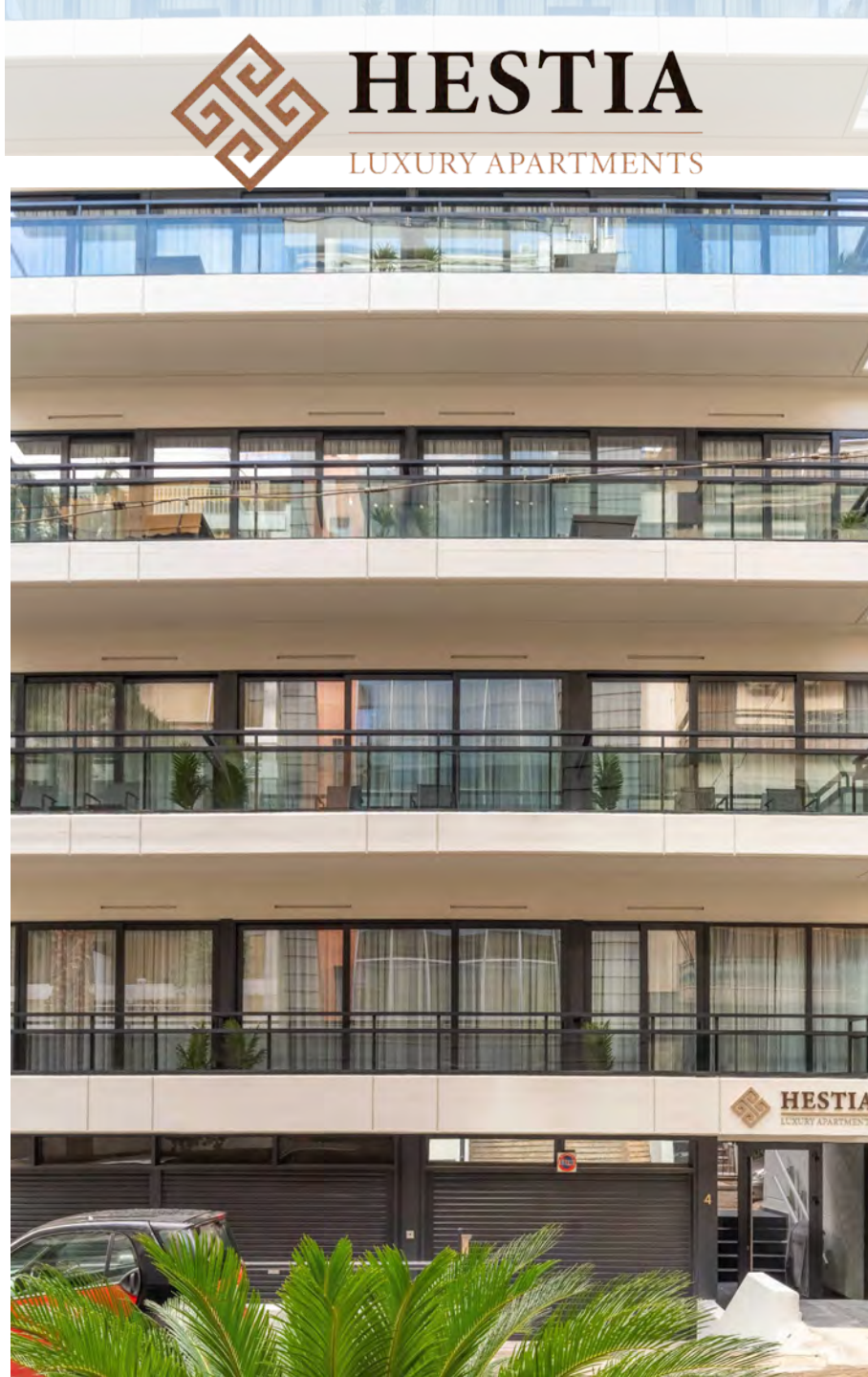
Address: 4 Dimitressa str. Building, 11528 Athens

Phone: +30 6972424788

E-mail: info@hestia-apartments.com

Building

HISTORY



Discover the finer side of Athens at our apartments on Dimitressa Street, a short walk away from the New National Gallery and leisurely walk from Kolonaki, Athens' most prestigious district. With a great location on a quiet residential street, the property is close to Athens' happening concert hall, Megaro Mousikis, and the metro station by the same name.

The area is affectionately called "Hilton" after the iconic luxury hotel that shaped it over five decades (from 1963 to 2022) before closing for renovation. Dimitressa 4 is also a short walk away from the exclusive Kolonaki district with its vibrant nightlife and upscale shopping. It is very close to numerous trendy cafés, fine restaurants, hip bars and intriguing attractions, as well to Downtown Athens just 20 minutes away by foot.

Dimitressa 4 Hestia Luxury Apartments was not always been the hotel that you can admire today! It has host various business colleges, making the building the core of Dimitressa's life.

On the inside, the rooms are bathed in understated luxury and a light palate of colors that immediately make you feel comfortable, complete with all modern amenities, from superbly equipped kitchens to impeccable climate control. This is the ideal address not only for businesspeople and digital nomads but also for all travelers seeking a higher level of comfort in a very central location.

Practical

INFORMATION

Smart - Locks

Passwords for smart-locks are shared with you via the relevant confirmation email, feel free to check your emails. For your safety please do not share your password with people you don't know.

Car Rental

For self-drive or chauffeur driven car hire, our Guest Experience Team can arrange a variety of vehicles to meet your personal requirements.

Late Check Out

Please contact our Guest Experience Team if you require your room after the official check out time. There is an additional charge for extension of your stay until 18:00.

Credit Cards

We accept all kind of credit cards.

Electricity

Power supply in your room is 220 Volt.

Fire Emergency

If for any reason you suspect a fire, call immediately our Guest Experience Team. If the fire alarm sounds, evacuate your room at once and use the stairs. Do not use the elevators. In case of fire, push the fire alarm button located in the hall, do not use the elevators. Fire extinguishers can be found on each floor. All our rooms are equipped with smoke detectors.

Florist

If you require any floral arrangements or flowers to send, our Guest Experience Team will be glad to help you.

Hairdresser

Our Support Team will be glad to set an appointment for you.

Heating/ Air Condition

Each apartment has a thermostat control in order to adjust the temperature you wish.

Housekeeping

Please contact our Guest Experience Team if you require any extra bath towels, pillows or duvet.

Internet

The password of your Wifi is shared with you via the relevant confirmation email, feel free to check your emails. There is available Wireless Internet in all rooms and public areas of the hotel.

Lost & Found

If you miss or have lost anything during your stay, please do not hesitate to contact our Support department.

Non-Smoking

The hotel is characterized as Non-Smoking. Smoking (including e-cigarettes) is therefore not permitted inside, in case of smoking inside we will charge you a penalty of €250. Please feel free to request a room with a balcony or use the roof top.

Pets

For the interest of hygiene, pets are not allowed in the property.

Restaurants

Our team is pleased to recommend restaurants or make reservations in a restaurant of your choice.

Safe Box

According to the Greek Civil Code, the hotel cannot be held responsible for any loss of money, jewelry or any other valuable possession belonging to the guest. However, for better protection of the valuables, you can use the safe boxes which are in your apartment.

Taxi / Transfer

Should you require a taxi or transfer, please contact our Guest Experience Team.

Banking

Branches and ATMs of all the main Greek banks can be found around Areos Park.

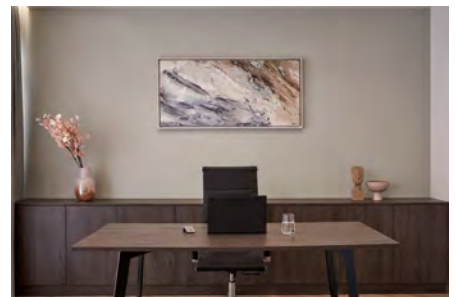
Tap Water

Water quality may vary in different countries. Prefer always bottled water.



the Place Dimitressa 4

the Place Dimitressa 4



General

INFORMATION

European Emergency Number 112

Police 100

First Aid 166

Fire Department 199

Tourist Police - Visitors Help Office +30 210 3222230

National Hellenic Tourist Organization +30 210 8707000

Time 14844

All Greece Weather Forecast 14944

Airlines

SERVICES

Aegean Airlines 8011120000, +30 210 6261700

Air France +30 211 1809474

Alitalia +30 210 9988900

Austrian Airlines +30 210 9601240

British Airways 00800 44 146798

Eleftherios Venizelos Athens Airport +30 210 3530000

Emirates +30 210 9333400

KLM +30 211 1809473

Lufthansa +30 210 6175200

Swiss Int'l Airlines +30 210 6175320

Turkish Airlines +30 210 9885700



City Points

OF INTEREST

Sightseeing

Acropolis: It is listed by UNESCO as a protected monument of cultural heritage. The greatest and finest sanctuary of ancient Athens, dedicated primarily to its patron, the goddess Athena, dominates the center of the modern city from the rocky crag known as the Acropolis.

Opening Hours
Summer 08:00 - 20:00, Winter 08:00 - 15:00
Tel. +30 210 3214172

Acropolis New Museum: The museum is located by the southeastern slope of the Acropolis hill, on the ancient road that led up to the "sacred rock" in classical times. The motivation for the construction of the new museum was that in the past, when Greece made requests for the return of the Parthenon Marbles from the United Kingdom.



(see the brochures at our desk on the ground floor)

Temple of Zeus: It is the biggest temple dedicated to Zeus, the King of Olympian gods who saved the city from a destructive flood. The constructions lasted 400 years.

Opening Hours
Summer 08:00 - 20:00, Winter 08:00 - 15:00
Tel. +30 210 9226330

Ancient Agora: The Agora was the heart of ancient Athens, the focus of political, commercial, administrative and social activity, the religious and cultural center, and the seat of justice. Opening Hours

Summer 08:00 - 20:00, Winter 08:00 - 15:00
Tel. +30 210 3210185

Odeon of Herodes Atticus: The theater was built in A.D. 161 by Herodes Atticus, an important Greco-Roman politician and sophist. In 1950 it was renovated in its current form in order to host modern music events. Artists that performed at the Odeon of Herodes Atticus include Maria Callas, Elton John, Florence and the Machine and many more."

Opening Hours
Summer 08:00 - 20:00, Winter 08:00 - 15:00
During Summer months it opens for music events after sunset.
Tel.+30 210 3241807



the View

Roman Agora: After the invasion of the Herulae in A.D. 267, the city of Athens was restricted to the area within the Late Roman fortification wall, and the administrative and commercial center of the city was transferred from the Ancient Agora to the Roman Agora and the Library of Hadrian.

Opening Hours

Summer 08:00 - 20:00, Winter 08:00 - 15:00

Tel.+30 210 3245220



Kerameikos: As suggested by its name, Kerameikos was a settlement of potters and vase painters, and the main production center of the famous Attic vases. Those parts of the Kerameikos that were located near the riverbank suffered continuously from the overflowing river, and so the area was converted into a burial ground, which gradually developed into the most important cemetery of ancient Athens.

Opening Hours

Summer 08:00 - 20:00, Winter 08:00 - 15:00

Tel. +30 210 3463552



Ancient Temple of Poseidon in Sounion: Cape Sounion, is famous for its strategic location as the southernmost tip of Attica, the rich silver mines and the temple of Poseidon.

Opening Hours

Summer 08:30 - Sunset, Winter 09:00 -

Sunset Tel. +30 22920 39363



Philopappou: It is the terrace of Athens, perfect for a short escape in the city center. Philopappou area extends to three hills with important points of interest such as Pnyx, the Observatory of Athens, Philopappou Monument and the theater of Dora Stratou.



Lycabettus Hill: The second highest hill of Athens with spectacular view of the whole city. People can visit St. George by the funicular. On the top, there is also one of the most important open-air theaters.

Central Food Market: It is the biggest and the oldest market of Athens, an attraction for locals and tourists, not only for the historic building of 1886 but for the picturesque small streets where spices and traditional Greek products, may be found in abundance.



Useful INFORMATION

Nearest HOSPITALS

1. Athens General Hospital “G. Gennimatas”

Mesogeion 154, 11527, Athens

Tel. +30 210 7701211-5

2. Regional General Hospital “Evangelismos”

Ipsilantou 45-47, 10675, Kolonaki, Athens

Tel. +30 210 7201000

3. Regional General Hospital “Laiko”

Agiou Thoma 17, 11527, Goudi Athens

Tel. +30 210 7456000

4. Athens General Hospital “Ippokrateio”

Vas. Sofias 114, 11527, Ampelokipoi Athens

Tel. +30 210 7483770

5. Athens Private Central Clinic

Asklipiou 31 & Navarinou, 10680 Athens

Tel. +30 210 3674002

6. Children’s Regional General Hospital “Agia Sofia” Therianou 4-6, 11473, Athens

Tel. +30 210 3349100

Local Dentist: +30 2103252105

EMBASSIES

Albania +30 210 6876200

Argentina +30 210 7224710

Austria +30 210 7257270

Australia +30 210 8704000

Belgium +30 210 3617886

Brazil +30 210 7213039

Bulgaria +30 210 3617886

Canada +30 210 7273400

Chile +30 210 8071020

China +30 210 6723819

Croatia +30 2106777033

Cyprus +30 210 3734934

Czech Republic +30 210 6713755

Denmark +30 210 7256440

Egypt +30 216 0002700

Finland +30 210 7255860

France +30 210 3391000

Germany +30 210 7297988

Great Britain +30 210 7272600

Holland +30 210 7254900

Hungary +30 210 7256800

Iceland +30 210 6208103

India +30 210 7216481

Indonesia +30 210 6774692

Italy +30 210 3617260

Iran +30 210 6741436

Iraq +30 210 6722330

Ireland +30 210 7232771

Israel +30 210 6705500

Japan +30 210 6709900

Jordan +30 210 6744161

Korea +30 210 6984080

Lithuania +30 210 7294356

Luxemburg +30 210 7256400

Malta +30 210 7785138

Mexico +30 210 7294780

Morocco +30 210 6744210

New Zealand +30 210 6924136

Norway +30 210 7246173

Peru +30 210 7792761

Philippines +30 210 6721837

Pakistan +30 210 729 0214

Poland +30 210 6797700

Portugal +30 210 7290096

Russia +30 210 6725235

Saudi Arabia +30 210 671 6911

Serbia +30 210 7472350

Spain +30 210 9213123

South Africa +30 210 6178020

South Korea +30 210 6984080

Sweden +30 210 7266100

Switzerland +30 210 7230364

Turkey +30 210 7263000

Ukraine +30 210 6800231

UAE +30 210 6770220

UK +30 210 7272600

USA +30 210 7212951

TELEVISION

Channel 1. 40 SMILE

Channel 2. BBC WORLD

Channel 3. FRANCE 24

Channel 4. TVS MONDE

Channel 5. T VE International Europe

Channel 6. CANAL 24h

Channel 7. BVNTV

Channel 8. ZDF

Channel 9. 3SAT

Channel 10. KIKA

Channel 11. RTL AUSTRIA

Channel 12. ZWEI AUSTRIA

Channel 13. EUROS PORT 1 Deutschland

Channel 14. BBC WORLD

Channel 15. DV ENGLISH

Channel 16. RUSEUROPE

Channel 17. RAI 1

Channel 18. RAI2

Channel 19. RAI3

Channel 20. CGIN

Channel 21. CGIN DOCUMENTARY

Channel 22. TNT WORLD HD

Channel 23. RIK

Channel 24. ERT 1 HD

Channel 25. ERT 2 HD

Channel 29. ERT 3 HD

Channel 30. ALPHA HD

Channel 31. ANTI HD

Channel 32. STAR HD

Channel 33. MEGA HD

Channel 34. SKAI HD

Channel 35. MTV HD

Channel 36. OPEN TV

Channel 37. VOULI

Channel 38. MAD

Channel 39. RISE TV

Channel 40. NICKELODEON

Electrical

APPLIANCES MANUAL

Dish Washer

1. Open the Dish Washer
2. Find the soap space and place the cleaning tablet
3. Make sure you have placed all the dirty dishes in the Dish Washer between racks
4. Close the door of the Dish Washer
5. Select the cleaning program you want to use
6. Press Start

DeLonghi Nespresso Machine

1. Rinse out the water reservoir, then fill it most of the way with fresh tap water
2. Press the “lungo” button, which will turn the unit on
3. Slide the reservoir into place on the back of the Nespresso
4. Place a large mug
5. Press the “lungo” button to start rinsing the machine

Morris Kettle

1. Fill your electric kettle with water
2. Set the kettle on its base
3. Flip the power switch on the backside of the kettle to the “On” position
4. Allow 2-4 minutes for the water to begin boiling
5. Handle the kettle with caution while it’s hot

Safe Box

Inside your wardrobe you will find a safe box.

Instructions:

To Lock: While the door is open, press the reset button located on the back side of the door. The yellow light will be on with a short beep. Please input the user code (from 3-8 digits) using any number from “0” to “9” within 15 seconds, then press “A” or “B” to confirm it. Then close the door and turn the round opening knob anti-clockwise to lock it.

To open: Enter the same 3-8 digits code and press “A” or “B”. The green light will be on. Please turn the round knob clock-wise within 5 seconds and pull out the door to open the safe.

Please keep the safe open when you check-out.

Microwave

1. Select the type of food that you are cooking by pressing the My plate button once or more times
2. Select the size of the serving by turning the dial Knob
3. Press the start button

Cooking starts and when it has finished

1. The oven beeps 4 times
2. The end reminder signal will beep 3 times
3. The current time is displayed again

Ceramic Hobs

Switching on manually

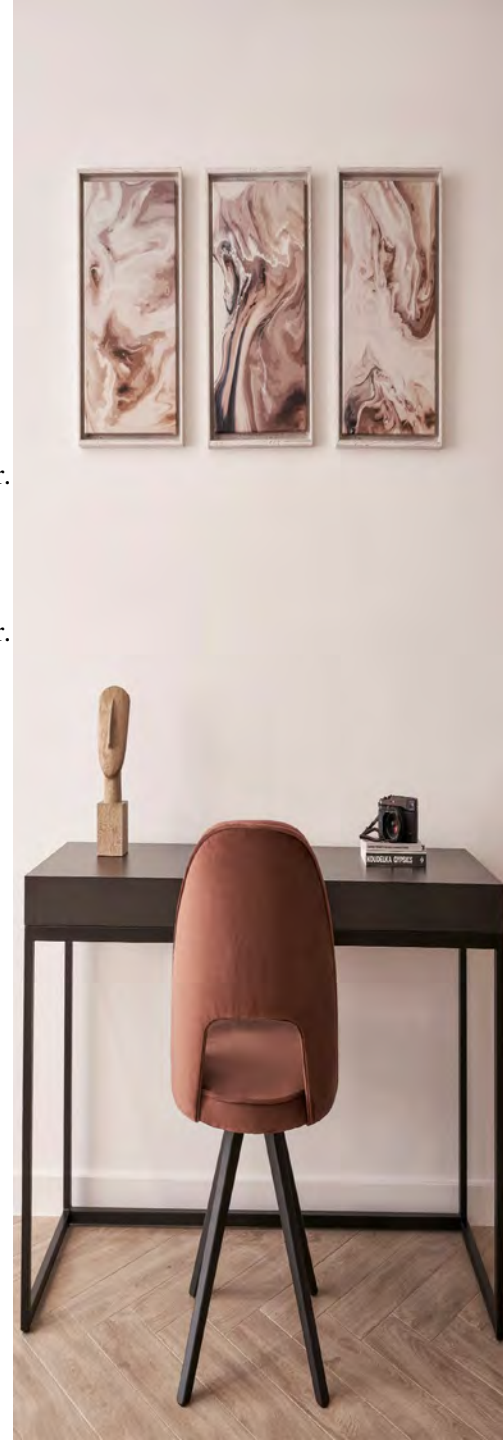
1. Touch the sensor for selecting the cooking zone you want.
 2. Select the power level you want.
 3. While the power level is flashing, touch the sensor.
 4. Touch the sensor for selecting the front right cooking zone.
 5. Select the power level you want.
 6. While the power level is flashing, touch the sensor.
- The selected power setting is shown in the front right cooking zone display, the rear right cooking zone display goes out.

Switching off the extended cooking area

1. Touch the sensor for selecting the cooking zone you want.
2. The power level will flash in the cooking zone display and the indicator lamp for the extended cooking area will light up constantly.
3. Touch the sensor repeatedly until the indicator light goes out.

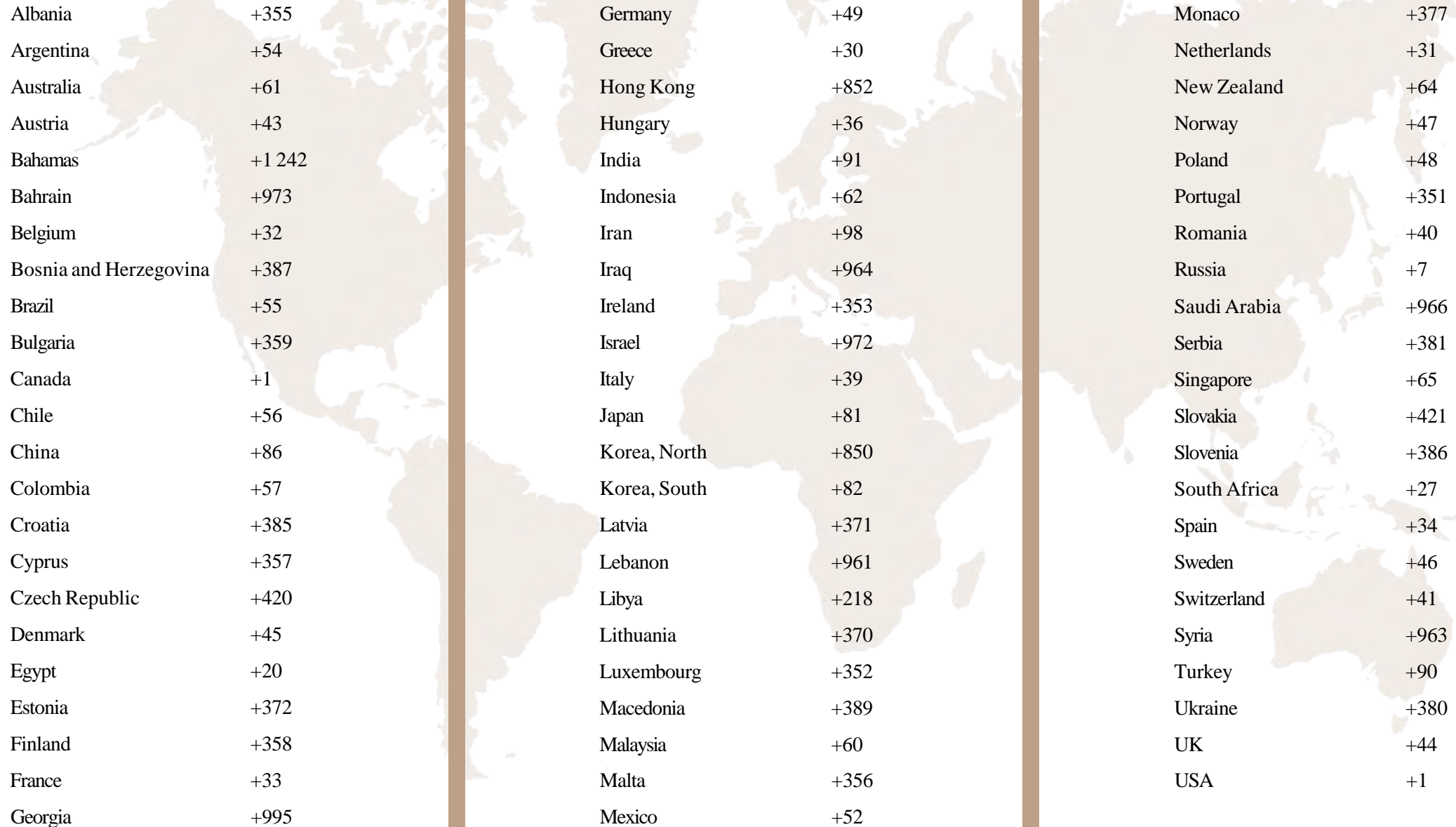
When “Lo” sign appears :

Touch the key lock control. If all heating zones are switched off the timer indicator will show “Lo”: If one or more heating zones is switched on the timer indicator will flash between “Lo” and “-“. To unlock the controls: Touch and hold the key lock control for approx. 20 seconds until the sign goes off.



Country Codes

& TIME ZONES



Albania	+355	Germany	+49	Monaco	+377
Argentina	+54	Greece	+30	Netherlands	+31
Australia	+61	Hong Kong	+852	New Zealand	+64
Austria	+43	Hungary	+36	Norway	+47
Bahamas	+1 242	India	+91	Poland	+48
Bahrain	+973	Indonesia	+62	Portugal	+351
Belgium	+32	Iran	+98	Romania	+40
Bosnia and Herzegovina	+387	Iraq	+964	Russia	+7
Brazil	+55	Ireland	+353	Saudi Arabia	+966
Bulgaria	+359	Israel	+972	Serbia	+381
Canada	+1	Italy	+39	Singapore	+65
Chile	+56	Japan	+81	Slovakia	+421
China	+86	Korea, North	+850	Slovenia	+386
Colombia	+57	Korea, South	+82	South Africa	+27
Croatia	+385	Latvia	+371	Spain	+34
Cyprus	+357	Lebanon	+961	Sweden	+46
Czech Republic	+420	Libya	+218	Switzerland	+41
Denmark	+45	Lithuania	+370	Syria	+963
Egypt	+20	Luxembourg	+352	Turkey	+90
Estonia	+372	Macedonia	+389	Ukraine	+380
Finland	+358	Malaysia	+60	UK	+44
France	+33	Malta	+356	USA	+1
Georgia	+995	Mexico	+52		



TIME ZONES



HESTIA

LUXURY APARTMENTS

